

FLAT 5, 1 NEWNHAM CROFT STREET, NEWNHAM



Address:

Flat 5, 1 Newnham Croft Street, Newnham, Cambridge, CB3 9HR

Location:

In a small courtyard at a development to the rear of the Co-Op store in the village of Newnham.

Type:

A first floor duplex apartment.

Construction:

Believed to date from the late 1970's/1980's, the property is of brick cavity construction beneath a pitched slate roof.

Accommodation:

The entrance is accessed via an external staircase and walkway area.

First Floor: Small entrance hall with stairs to second floor; Sitting Room with fitted carpet, emulsion to walls; Kitchen/Breakfast Room with linoleum flooring, a range of new MDF base & wall units; Shower Room with new white WC wash hand basin, separate shower cubicle, tiled walls.

Second Floor: Bedroom (3.5m x 3.66m) with fitted carpet, two velux windows, eaves storage cupboards.

The gross internal area of the property is 56m².

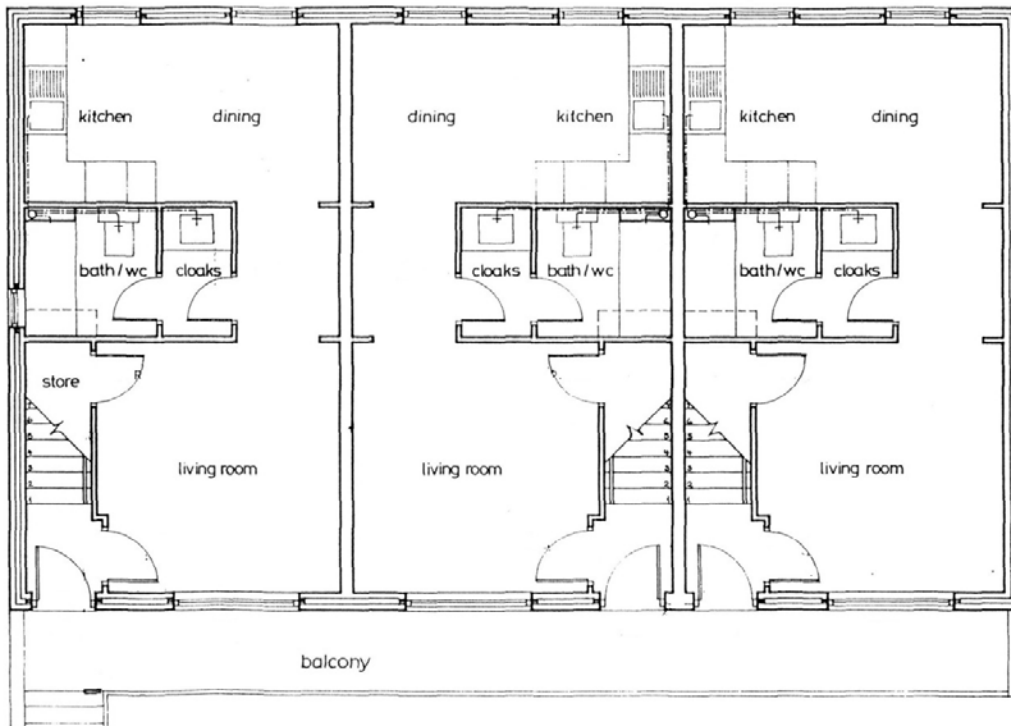
Outside: There is a shared yard, bin/cycle store area. It is believed the property does not benefit from allocated parking spaces.

Services:

Mains electricity, water and drains are connected. Space heating is provided by electric night store and panel heaters.

Flat 5, 7 and 9 Newnham Croft

The flats are first floor flats and have two storeys (bedroom on the second floor).



|| **Flat 5** ||

|| **Flat 7** ||

|| **Flat 9** ||

